

Digital Print Fusing, Laminating and Mounting Machine



EXCELAM-PLUS COLD Series

- ✓ PLUS880COLD/R
- ✓ PLUS1120COLD/RS
- ✓ PLUS1400COLD/RS
- ✓ PLUS 1600COLD/RS
- ✓ PLUS880COLD/RSE
- ✓ PLUS 1120COLD/RSER
- ✓ PLUS 1400COLD/RSER
- ✓ PLUS 1600COLD/RSER
- ✓ PLUS1600COMBI/RSER



KEY POINTS OF INVENTION FOR EXCELAM PLUS COLD Series

- Single Side Lamination
- Adjustable Roller Gap Height
- Various Range of Optional Film Unwinder and Rewinder
- Available Wide Range Jobs
- Dual Positioning Top Unwinder
- Easy Operation With Optical Safety System
- Foot Pedal Operation for Large Size Lamination

FEATURES OF EXCELAM PLUS COLD Series

- Safety Function with Photo Sensor for Feeding Area
- Speed & Temperature Control System
- Sub Heating System for Upper Roller(Combi)
- Mounting Up to 13mm
- Back Trimmer for Limited Web Removal
- High speed Lamination (Up to 5m/min/Q880 up to 3m/min)
- Dual Film Core Adaptor & Strong Unwinder Shaft

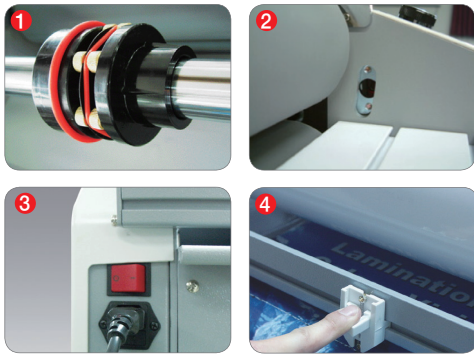
► **APPLICATION OF EXCELAM-PLUS COLD Series**

EXCELAM-PLUS COLD is the perfect machine for wide range of service in a copy shop environment or as a print finishing. Ideal for laminating posters, ink-jet prints, leaflets and maps with super results and for truly professional mounting up to 13mm. Super Cold Laminating results on wide ranges of Cold films from 25micron & 50micron GMP Crystalex Film (Polyester Base Cold Film) Including 75micron & 100 micron GMP Pronex Cold UV Film (Soft Touch Cold Film). Features include variable speed and pressure adjust handle, for laminating thickness and pressure, mounting thickness setting.

- Design Proofing for Mass production
- Posters, Pop Signs, Menu
- Bookcovers
- Photo Album Covers & Inner Pages
- Photo Embossing Lamination
- Gift & Greetings Cards
- Name Card Lamination with Spot Sleeking(Fusing)
- Anti Counterfeit Lamination
- Security Printing of Gift Certificate
- Labels



► **DEVICES FOR MULTI FUNCTION**



- 1 Film Adaptor/Dual 3"**
- 2 Safety Sensor**
Positioned at the leading edge of the rollers, ransmission for Single / Double Side Lamination Decurling Device for Single Side Lamination
- 3 Power Switch**
Located at the back left of the machine, it applies power to the laminator. The POWER lamp will illuminate when position marked I is pushed.
- 4 Back Trimmer**
Film cutting knife is the device for cutting laminated materials. if it is pushed right(or left) by pressing blade, it will cut films.

► **SPECIFICATION OF EACH EXCELAM-PLUS COLD Series**

Model Name	PLUS880COLD/R (RSE)	PLUS1120COLD/RS (RSER)	PLUS1400COLD/RS(RSER)	PLUS1600COLD/RSE/R
Laminating Speed	3m/min	5m/min	5m/min	5m/min
Laminating Width	880mm	1120mm	1400mm	1600mm
Laminating Films	25mic~500mic	25mic~500mic	25mic~500mic	25mic~500mic
Substrate weight	80g/ m ² ~ 350g/ m ²	80g/ m ² ~ 350g/ m ²	80g/ m ² ~ 350g/ m ²	80g/ m ² ~ 350g/ m ²
Thickness Mount	13mm	13mm	13mm	13mm
Power Requirements	AC 220V-240V, 50/60Hz (120V/60Hz)			
Power Consumption	100W, 0,4A	100W, 0,4A	100W, 0,4A	2000W, 8,3A
Warm up Time	-	-	-	3min
Heating System	-	-	-	Infrared Heater
Operating Temperature	-	-	-	40℃
Speed Control	Knob & Volume	Knob & Volume	Knob & Volume	Key Pad
Temperature Control	-	-	-	Key Pad
Pressure Adjustment	Manual (lever, 6-preset)	Manual (lever, 6-preset)	Manual (lever, 6-preset)	Manual (lever, 6-preset)
Film Core	77WH	77Dual	77Dual	77Dual
Dimensions(WxLxH)mm	1120x750x440mm	1500 x 750 x 1200mm	1640 x 750 x 1200mm	1840 x 750 x 1200mm
Type of Main Motor	DC W-Geard Motor /36V100W-DM012			
Type of Rewinder Motor	Link to Main Motor	Link to Main Motor	Link to Main Motor	Link to Main Motor
Stand	R(X) / RSE(O)	RS(O) / RSER(O)	RS(O) / RSER(O)	COMBI/RS(O)



RoHS



UL-WTDP, CB-TM



CE

KOSDAQ Registered Corporation(NO.018290)

